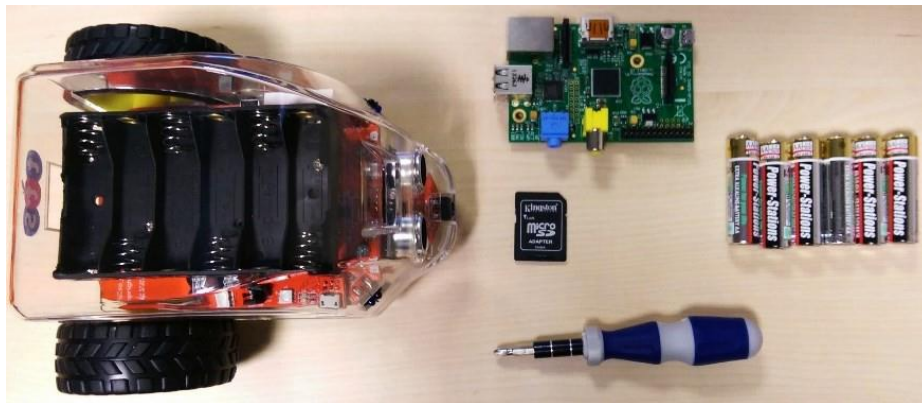


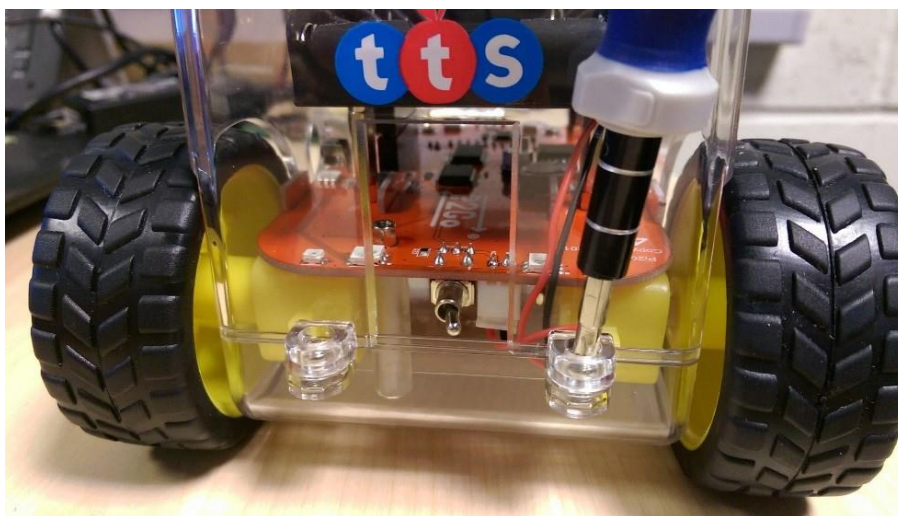
## TTS Pi2Go - Assembling a Raspberry Pi Model B

What you will need:-

- Pi2Go
- Raspberry Pi Model B
- Micro SD Card and adapter
- 6 AA batteries
- Philips head screwdriver



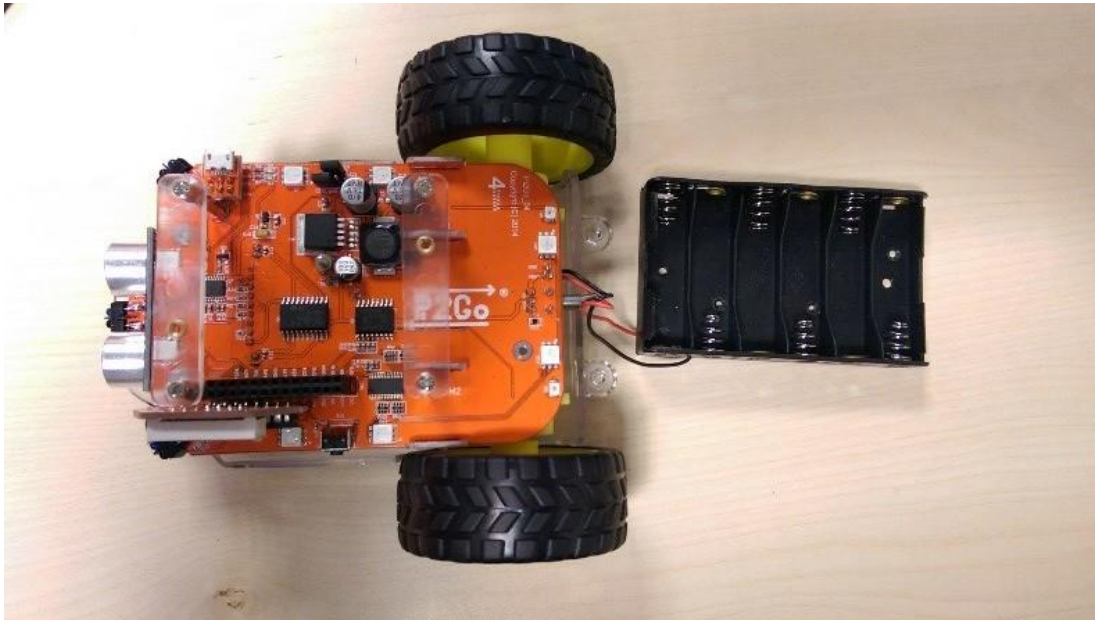
1. Unscrew the two screws at the back of Pi2Go



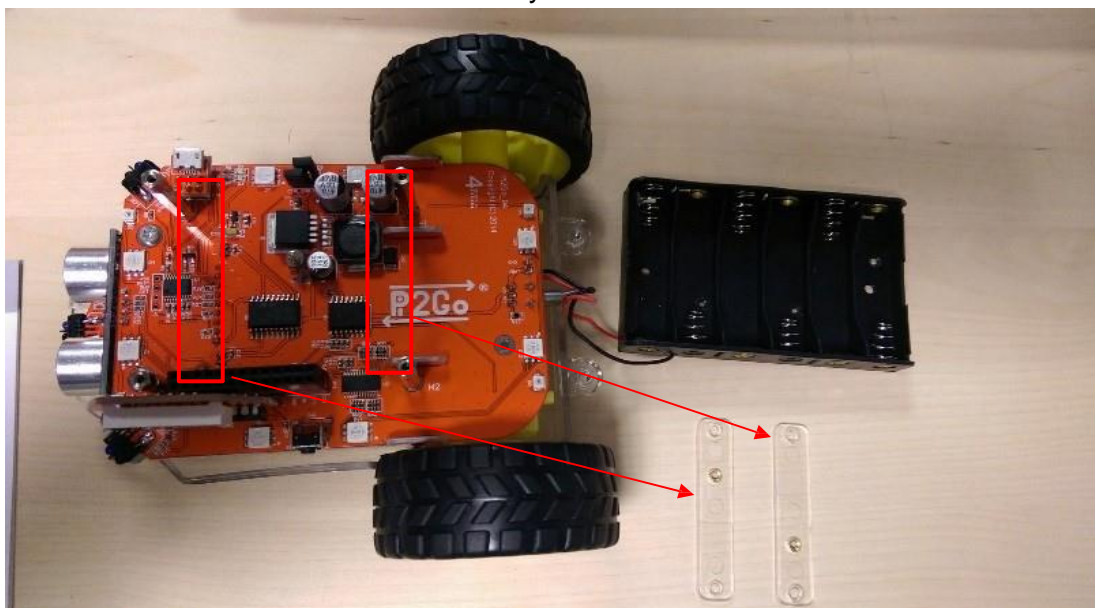
- Carefully remove the top case of Pi2Go. This can be done by lightly pushing the case forward and when the hooks at the front are clear, pull the case up and off.



- Unscrew the 2 screws in the battery pack and place battery pack to one side (be careful not to detach the wires attaching the battery pack to the Pi2Go)



- Unscrew the 4 screws of the 2 battery box carriers and remove





- Remove the 4 pillars and screw 2 of them in their new position as shown in picture

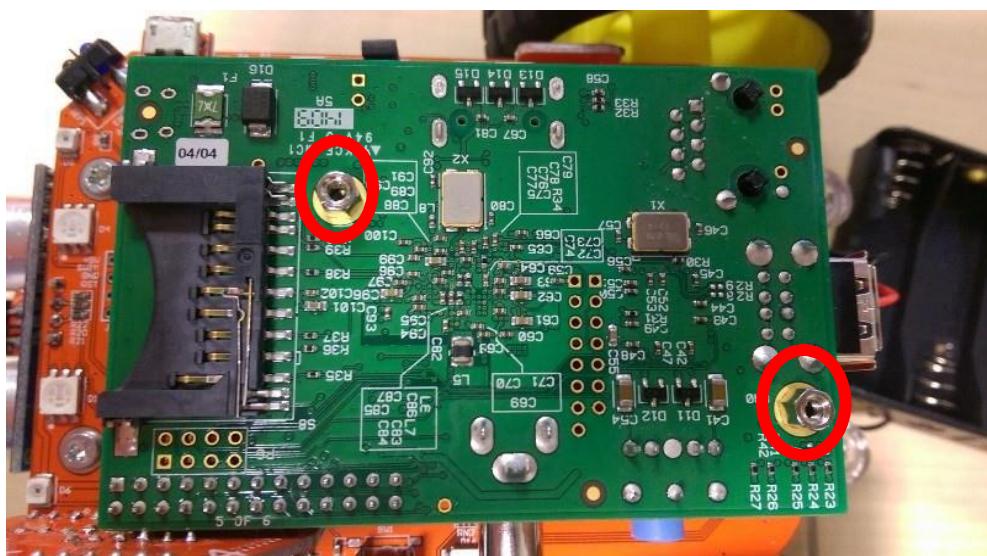


○ = old position of pillars      ○ = new position of pillars

- Attach Raspberry Pi to Pi2Go ensuring the GPIO pins are in place. It should rest on the two pillars that you have relocated for a snug fit



- Screw two of the 5mm female-male pillars into the Raspberry Pi. These screws should screw in to the pillars supporting the Raspberry Pi underneath.



8. Replace the battery pack and screw the two screws in position shown then add your batteries (6 x AA)



9. Insert your SD Card into the Raspberry Pi



10. Carefully replace the case, screw in the two screws at the back and add your WiFi dongle into one of the USB sockets at the back of the Pi2Go

