



S10/10-inch Touch Screen (Wallapp) User Manual

Version: 1.0.0

Published on Nov. 27, 2019

Content

Legal Statement	I
Update History	II
1 Introduction	1
2 Configuration	2
2.1 Edit Configuration Data	2
2.1.1 Room Information Management	3
2.1.2 Device Information Management	3
2.1.2.1 Add Device	3
2.1.2.2 Edit Device Information	4
2.1.3 Scene Management	6
2.1.3.1 Add Scene	6
2.1.3.2 Edit Scene	7
2.2 Upload Configuration Data	9
3 S57 Device Setting	12
3.1 Network Setting (Static IP Setting)	12
3.2 Device Setting	14
3.3 Change Password	15
3.4 Software Update	15
4 Operation	16
4.1 Interface	16
4.2 Lighting control	17
4.3 Curtain Control	19
4.4 Air Conditioner Control	19
4.5 Scene Control	20
4.6 Add Button to Favorites/Remove Button from Favorites	21

Legal Statement

HDL has all the intellectual property rights to this document and contents thereof. Reproduction or distribution for third parties are prohibited without written authorization from HDL. Any infringement of HDL's intellectual property rights will be investigated the legal liability.

The contents of this document will be updated as the updates of product versions or other reasons. Unless otherwise agreed upon, this document is to be used as a guidance only. All the statements, information and recommendations in this document makes no warranty expressed or implied.

HDL Automation Co., Ltd.

Update History

The form below contains the information of every update. The latest version contains all the updates of all former versions.

No.	Version	Update Information	Date
1	V1.0.0	Initial release	Nov. 27, 2019

1 Introduction

S10/10-inch Touch Screen (hereinafter referred to as S10) includes the following functions:

- Lighting control
- Curtain control
- Air conditioner control
- Scene Control

This user manual mainly offers the instruction of configuration and using of S10. The devices may be included in this manual are:

- S10/10-inch Touch Screen (Wallapp)
- A computer with Buspro Setup Tool 2
- Router
- Network cable(s)
- Dedicated Buspro cable (several)

Notice:

- ① Please refer to the datasheet attached to the product for the information of installation, wiring, specifications, etc.
- ② The pictures in this user manual are for reference only. The actual product should prevail.

2 Configuration

Users can edit the targets, scenes to be controlled by S10, together with the house structure, in HDL Buspro Setup Tool 2, then upload the data to S10.

2.1 Edit Configuration Data

Open HDL Buspro Setup Tool 2 and click “Apply” → “HDL ON/Xiao Bai”, as shown in Figure2-1. Create new project or select existed project to open the main editing page, as shown in Figure 2-2.

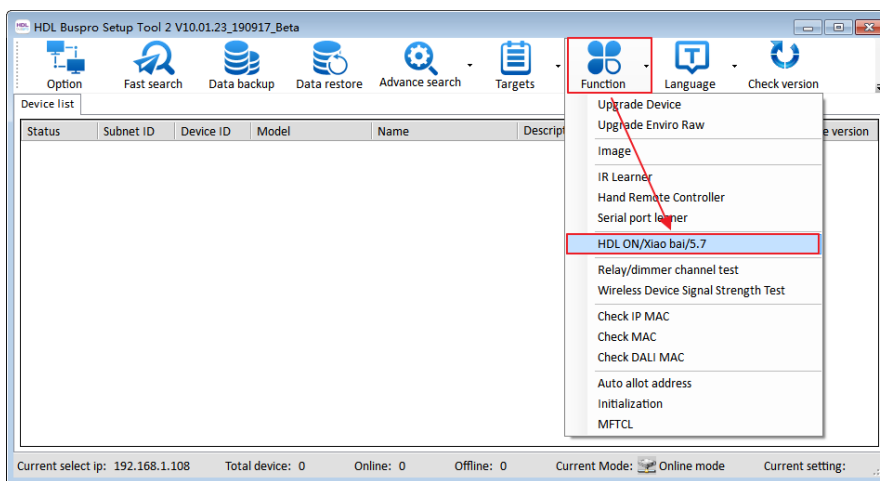


Figure2-1 Open editing page

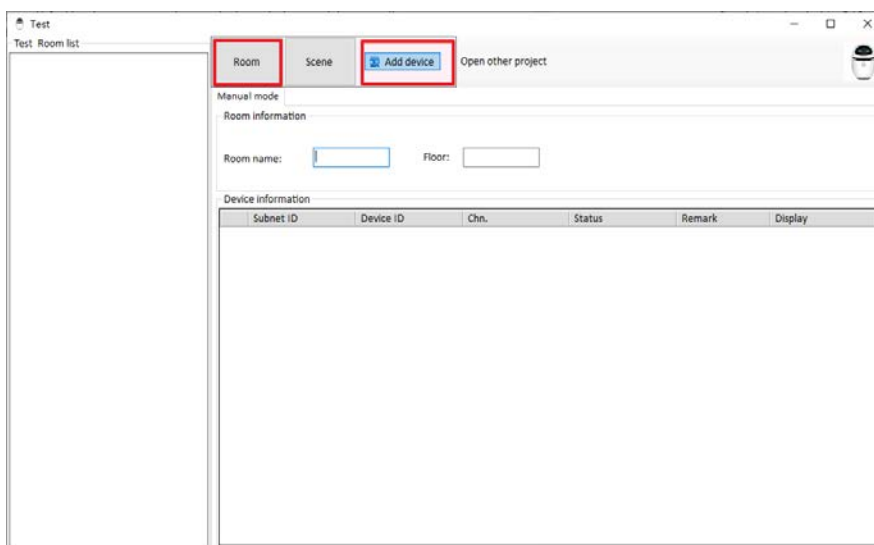


Figure 2-2 Editing page

2.1.1 Room Information Management

1. **Add new room:** Click “Room” button to add room, which will be shown on the right afterwards.
2. **Edit room information:** Click the room to be edit in the room list, and its name, floor, etc. can be changed in Room Information column on the right, as shown in Figure2-3.

Notice: If no device has been added to the room, this room won't be shown in room page after data uploaded to S10.

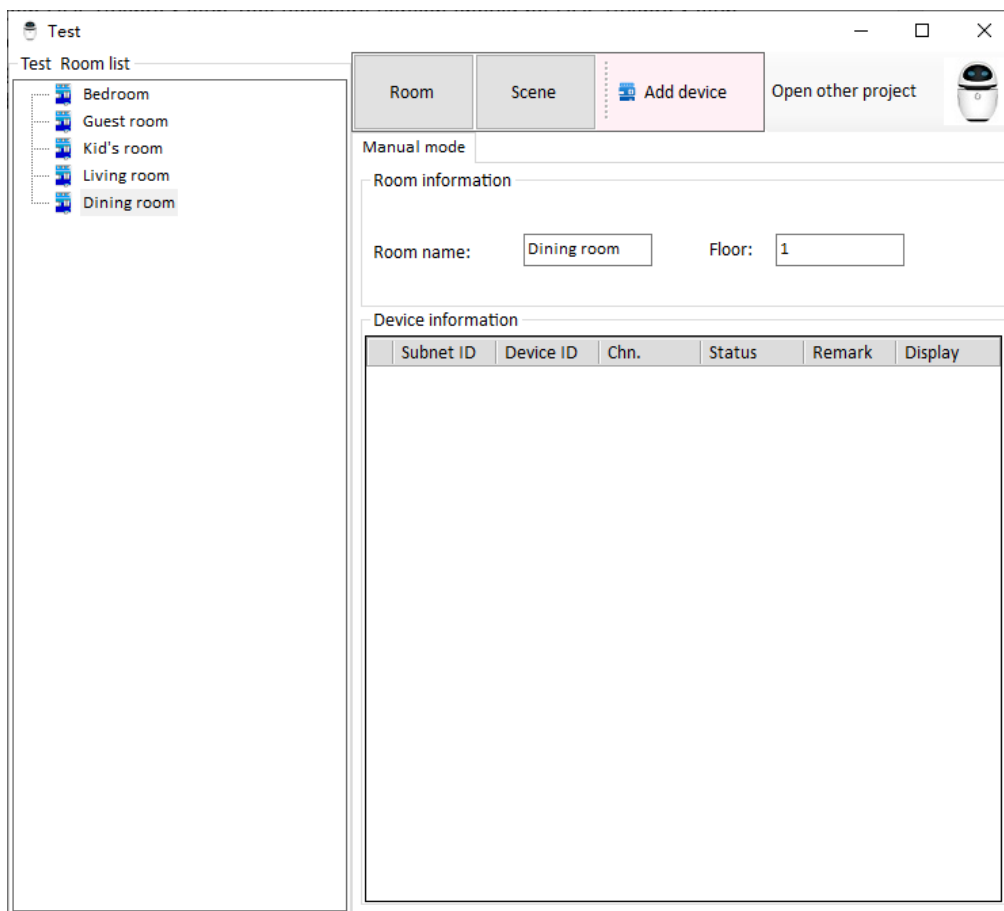


Figure2-3 Edit room information

2.1.2 Device Information Management

2.1.2.1 Add Device

Click the room to be added device, and click “Add Device” button, then a list of device category will pop up. Select the device in it to add, as shown in Figure 2-4.

The following types can be uploaded to S10 for now:

- Curtain: Sub-division “Curtain module” and “Retractable curtain” under “Curtain”
- Lighting: “Dimmer”, “Relay” and “RGB”
- Air Conditioner: Sub-division “HVAC” and “Panel AC” under “AC”
- Scene: “Room scene”

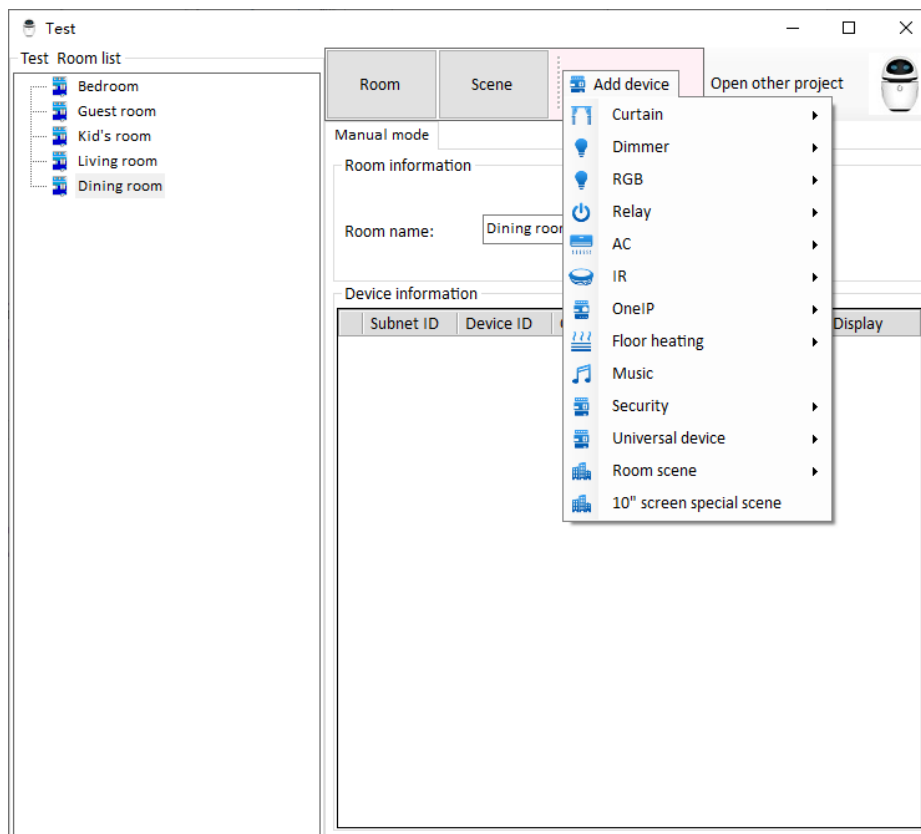


Figure 2-4 Add device

2.1.2.2 Edit Device Information

Click on the device in the room list and edit its information in “Device Information” column, as shown in Figure 2-5.

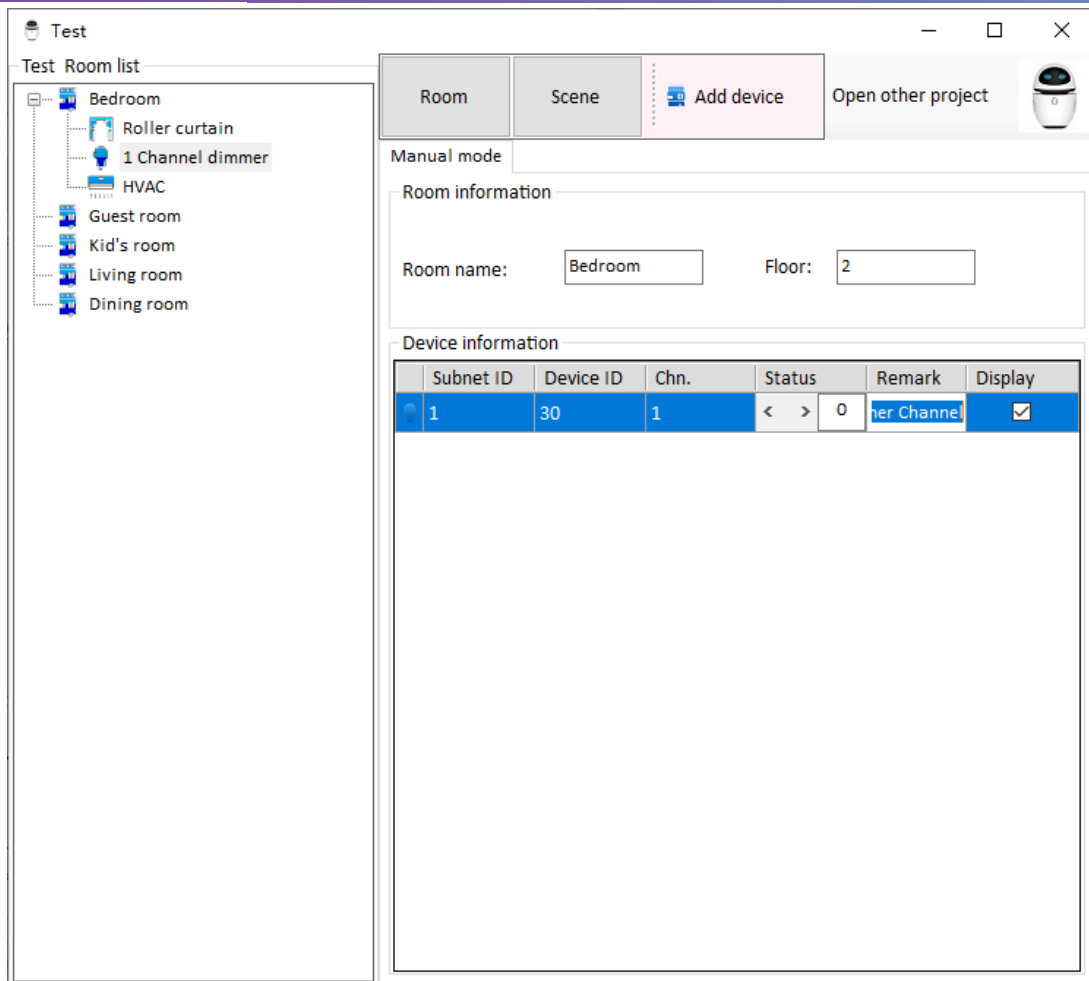


Figure 2-5 Edit device information

Notice:

1. About “Display”

If enabled, the corresponding data will be uploaded to S10 during data uploading.

If disabled, the corresponding data will not be uploaded to S10 during data uploading.

Please refer to [“Upload Configuration Data”](#) for data uploading.

2. About “Running time” and “Icon type” in curtain configuration

As shown in Figure 2-6, during curtain configuration process,

“Running time” refers to the time taken for the curtain to open completely from completely closed. The time should be measured by the user manually and enter.

“Icon type” means the icon type for retractable curtain, including “from left to right”, “from right to left” (these two are for single curtain) and “from sides to middle” (for double curtains).

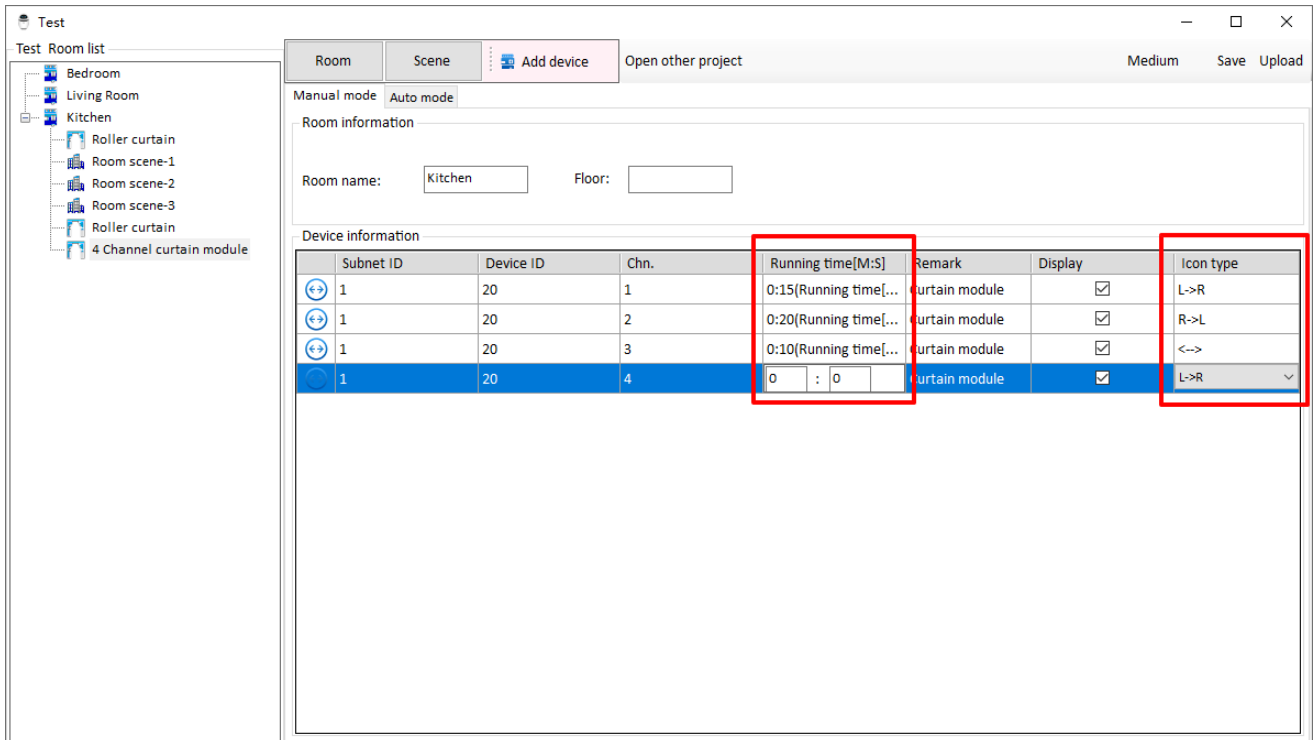


Figure 2-6 Curtain setting

2.1.3 Scene Management

S10 can be used to control scenes of a certain room after configuration.

2.1.3.1 Add Scene

Click on the room in the room list, and click “Add device” → “Room scene” to add room scene, as shown in Figure 2-7.

Notice:

Select “Add device” → “Room scene”, as shown in Figure 2-7, to add new scene, instead of selecting Scene button on the main configuration page.

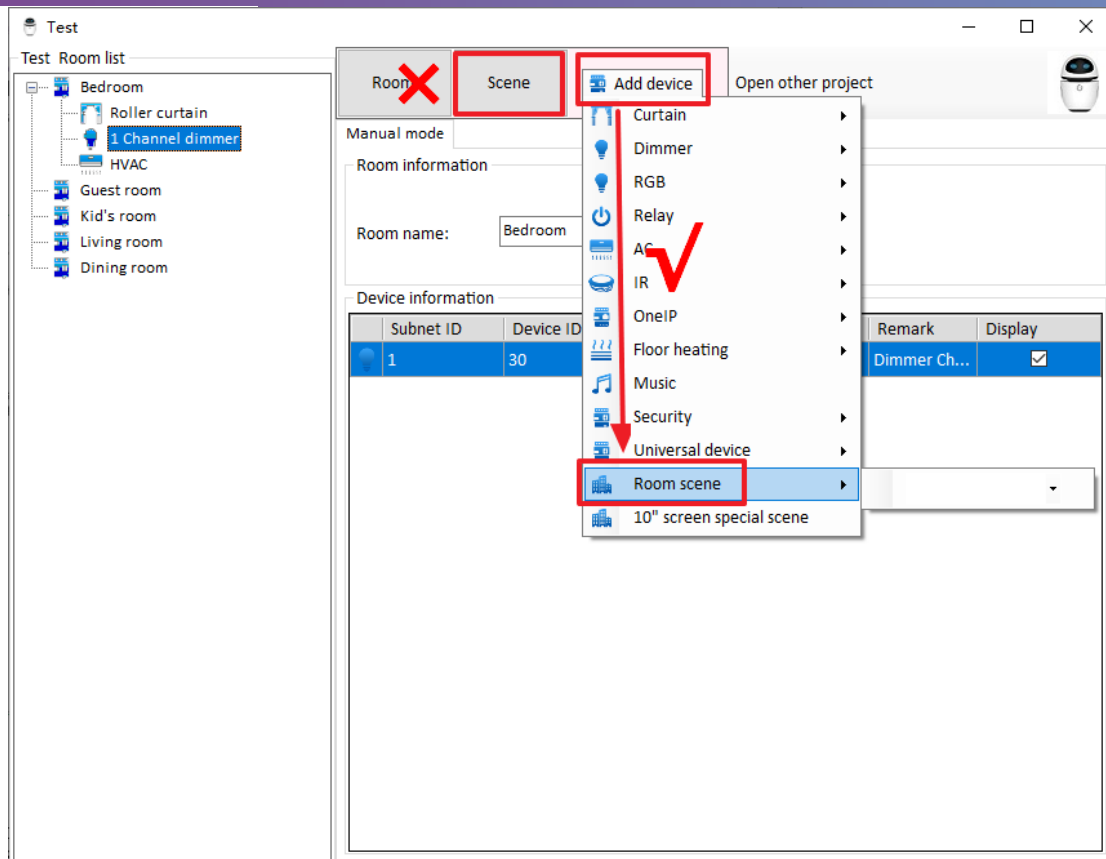


Figure 2-7 Add Scene

2.1.3.2 Edit Scene

Click the scene in the room list to edit its name, and add related devices to the scene in “Scene Setting”, as shown in Figure 2-8. Click “Save” to save the data.

Notice:

- ① Scenes in S10 supports all the device types except “GPRS control”, “Security module” and “Music control”.
- ② One scene button is only applicable to either activate or deactivate the scene. So if the user want to switch on/off the scene, two buttons should be configured: one for switch on, and the other for switch off.

For example, “Bright Mode” is to turn on all the lights and open all the curtains in the room. Then “Bright Mode on” is configured to turn on all the lights and open all the curtains in the room, while “Bright Mode off” is configured to turn off all the lights and close all the curtains.

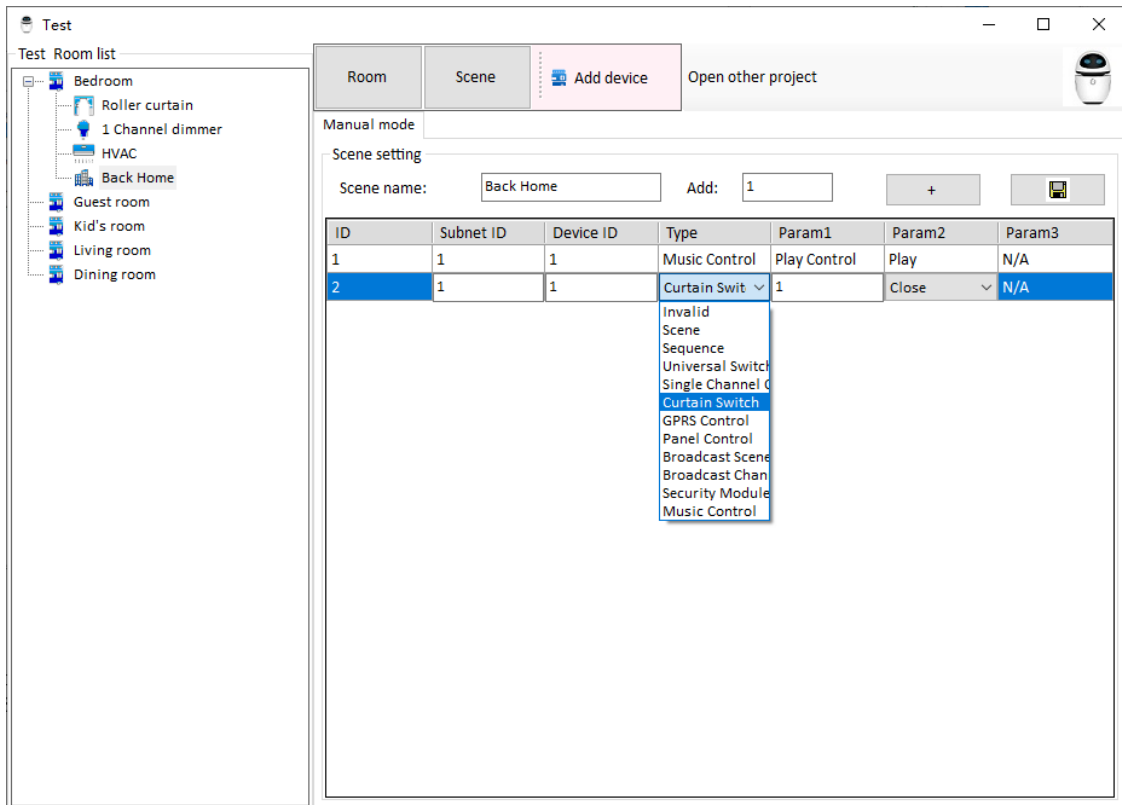


Figure 2-8 Edit Scene

2.2 Upload Configuration Data

1. After configuration is finished in Buspro Setup Tool 2, make sure that the PC on which runs Buspro Setup Tool 2 is in the same IP segment of S10, click on the robot button on the top right side of the window to open upload configuration window, as shown in Figure 2-9.

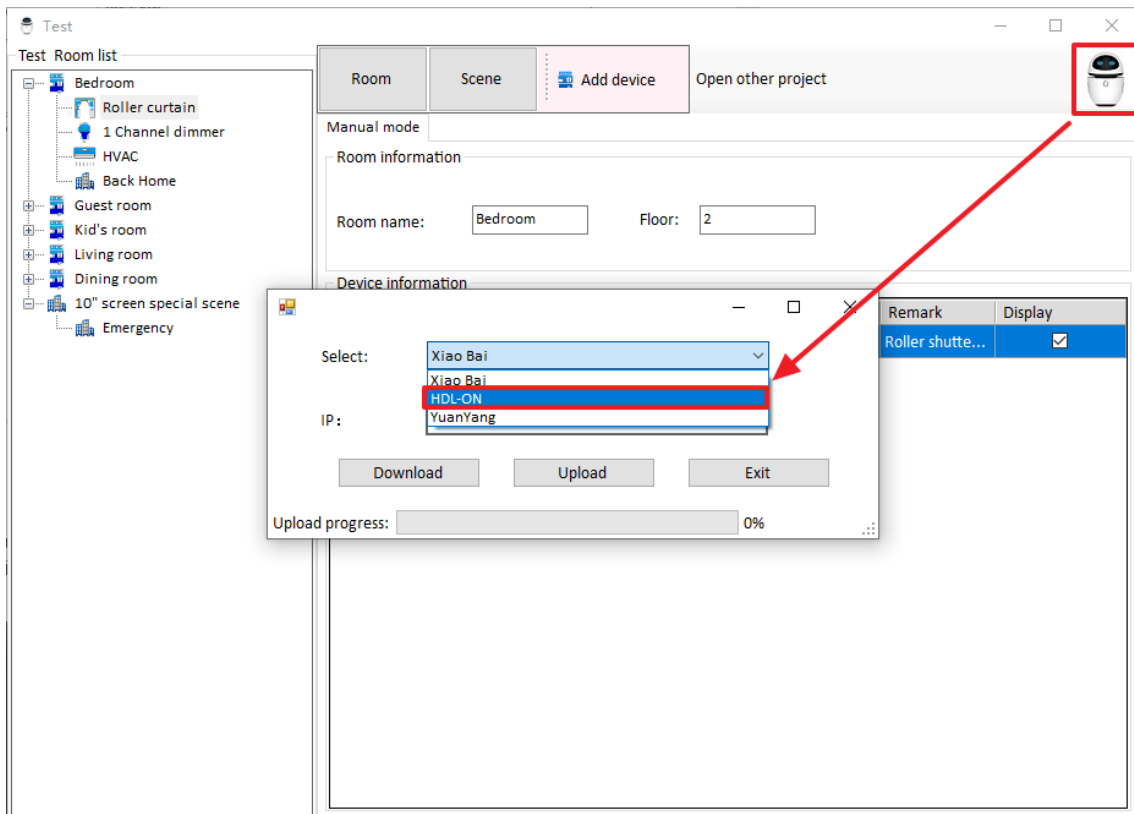


Figure 2-9 Upload data configuration window

2. The items in the configuration window should be set as follows:

“Select”: Select “HDL-ON”.

IP: Enter the IP of S10, which can be found in “Setting” → “Network” → “Ethernet” → “IP address”, as shown in Figure 2-10.

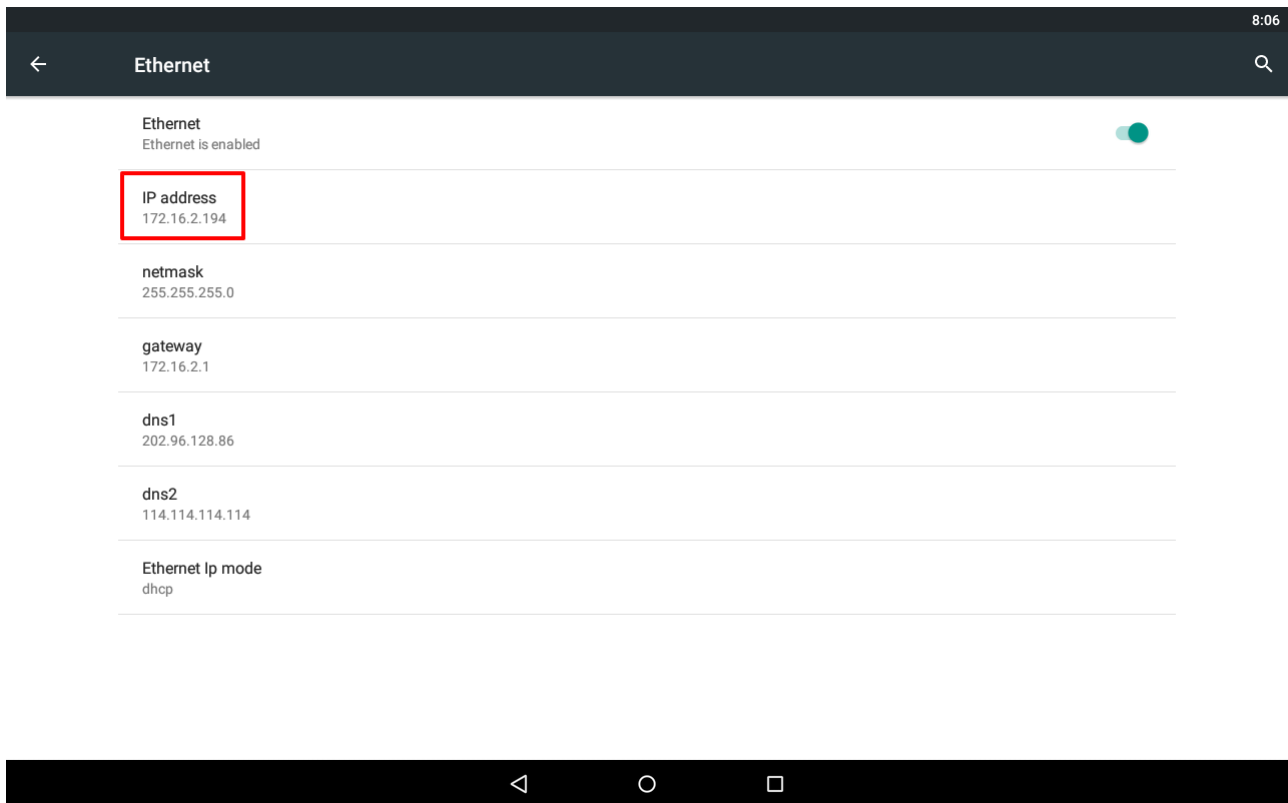


Figure 2-10 View device information

3. Click “Upload” button, and when “Upload progress” reaches 100%, the upload process is completed.
4. After data uploading, S10 won't refresh the data at once. Click “Return” button (Mark ① in Figure 2-11) to quit Wallapp and enter Wallapp again to refresh the data.

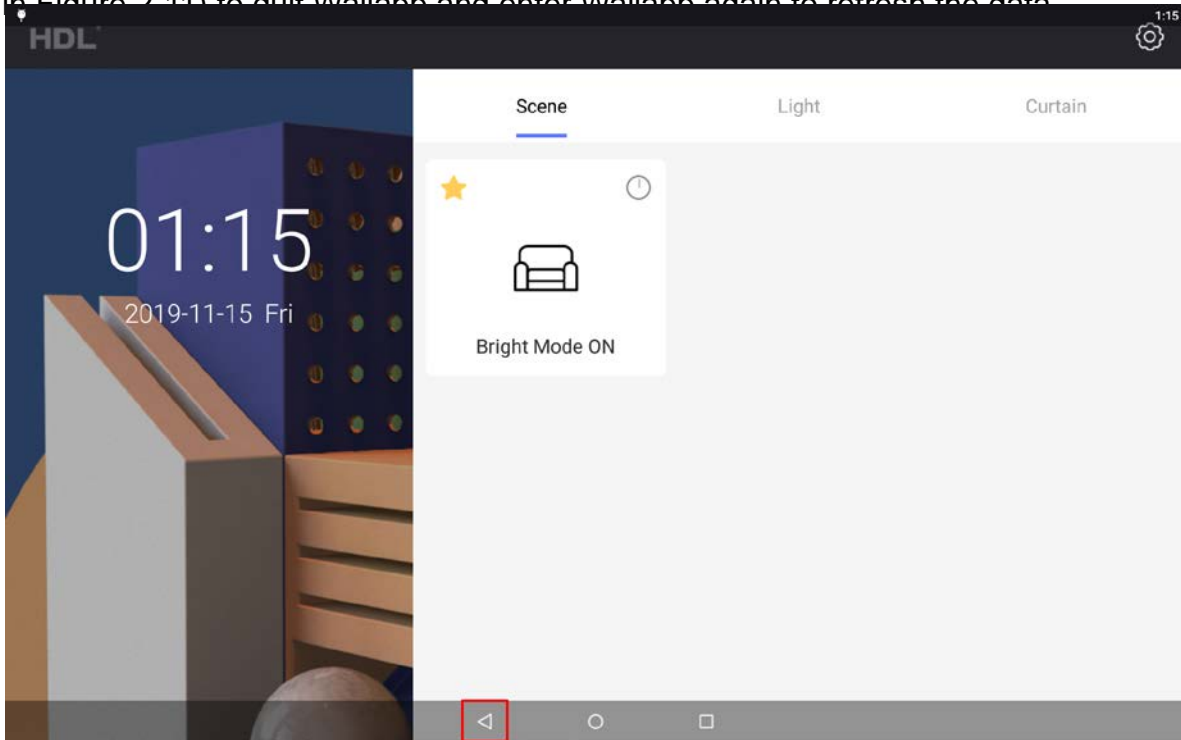


Figure 2-11 Return Button

3 S57 Device Setting

This chapter offers the information about the setting undertaken on S10.

Click Setting button on the top right side of the main page of Wallapp and enter password (Default password is 123456, which can be changed in “Change Password”) to open setting window, as shown in Figure 3-1.

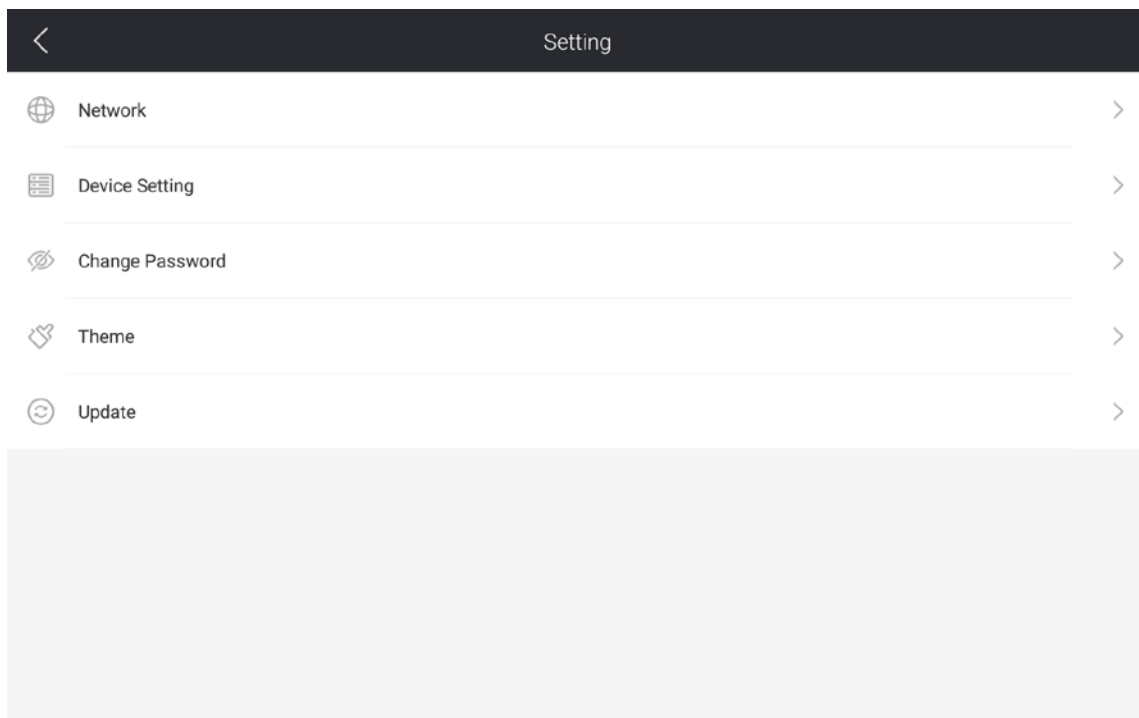


Figure 3-1 System Setting

3.1 Network Setting (Static IP Setting)

Click “Network Setting” to enter system setting page.

As shown in Figure 3-2, Click “More” → “Ethernet” → “Ethernet IP Mode” → “Static”. Enter the IP of S10 in “IP address”, and other items can be entered based on the reality.

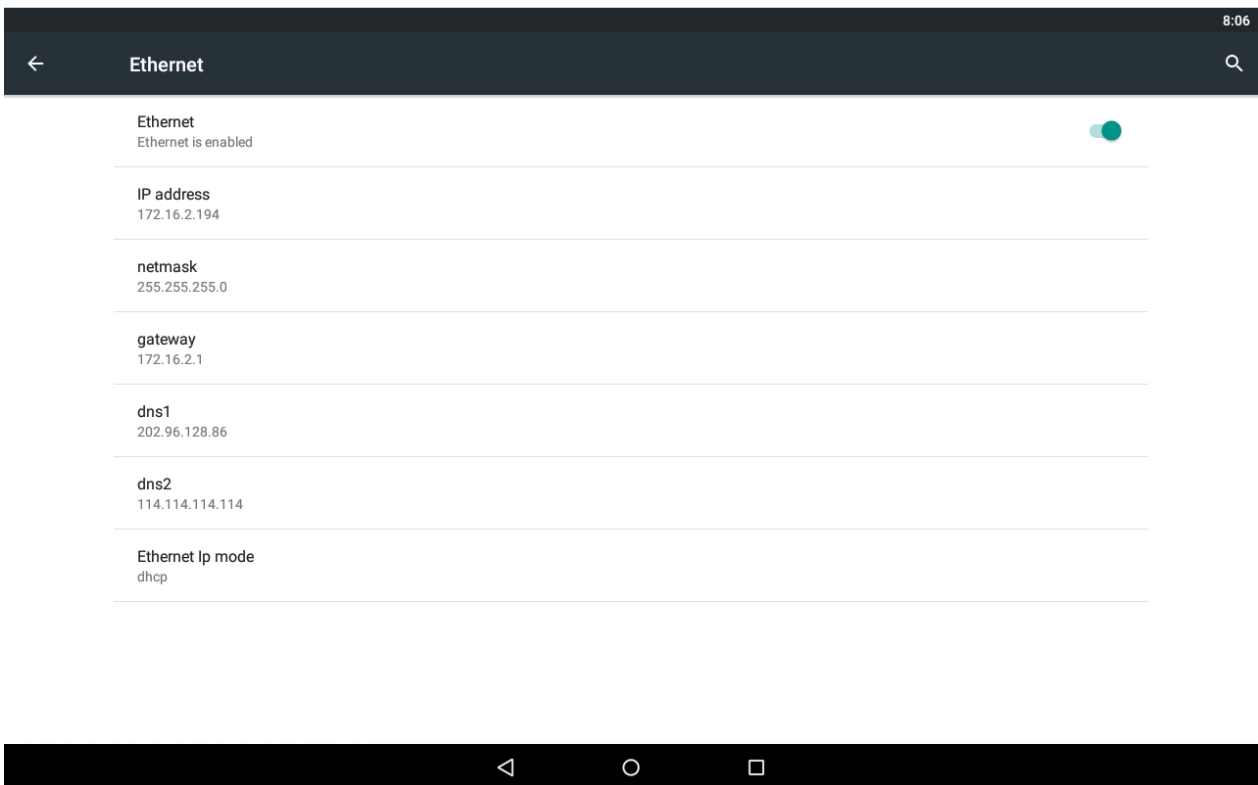
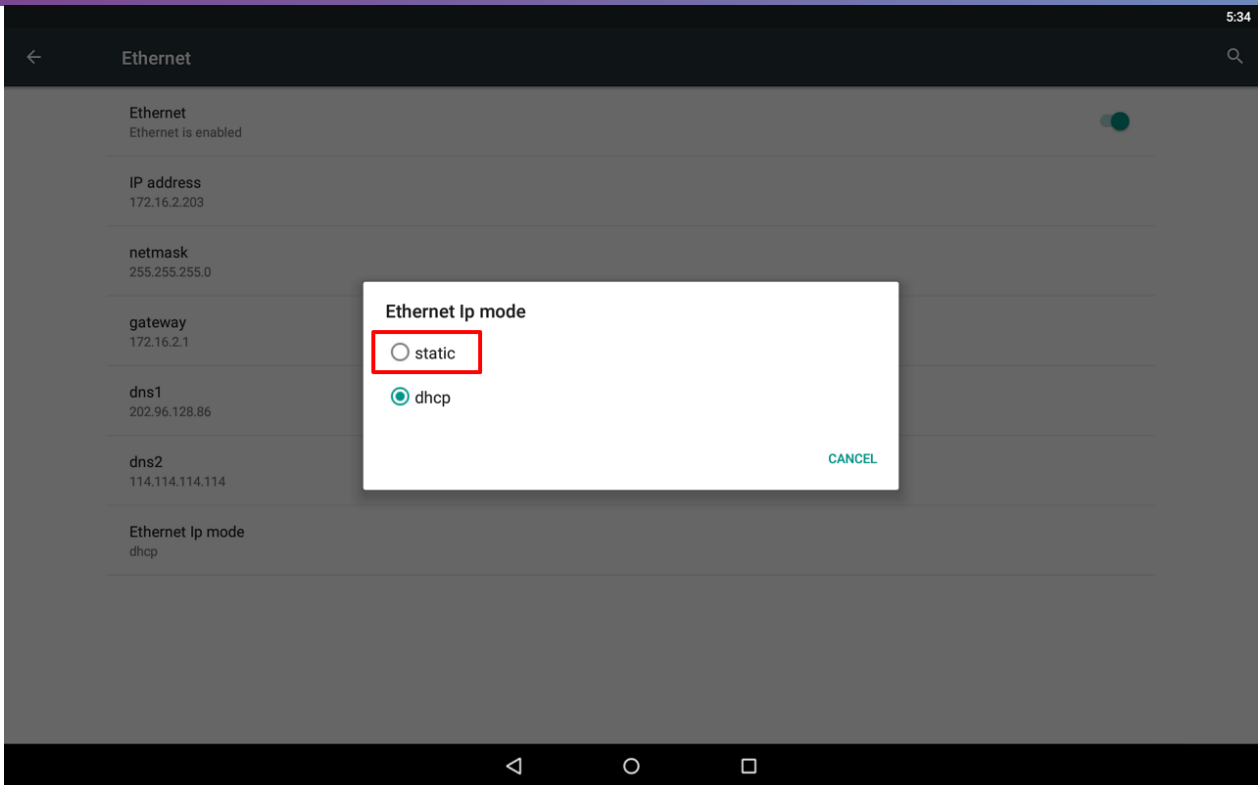


Figure 3-2 Static IP Setting

3.2 Device Setting

Figure 3-3 shows the Device Setting page of S10, which includes:

➤ **Subnet ID and Device ID**

Enter the Subnet ID and Device ID of this S10, which should be kept default under common circumstances.

➤ **Brightness**

If “Auto” is turned on, S10 will adjust its screen brightness according to the environment brightness automatically.

If “Auto” is turned off, user may adjust the screen brightness with the slider below.

➤ **Media Volume**

Adjust the media volume of S10 with the slider below.

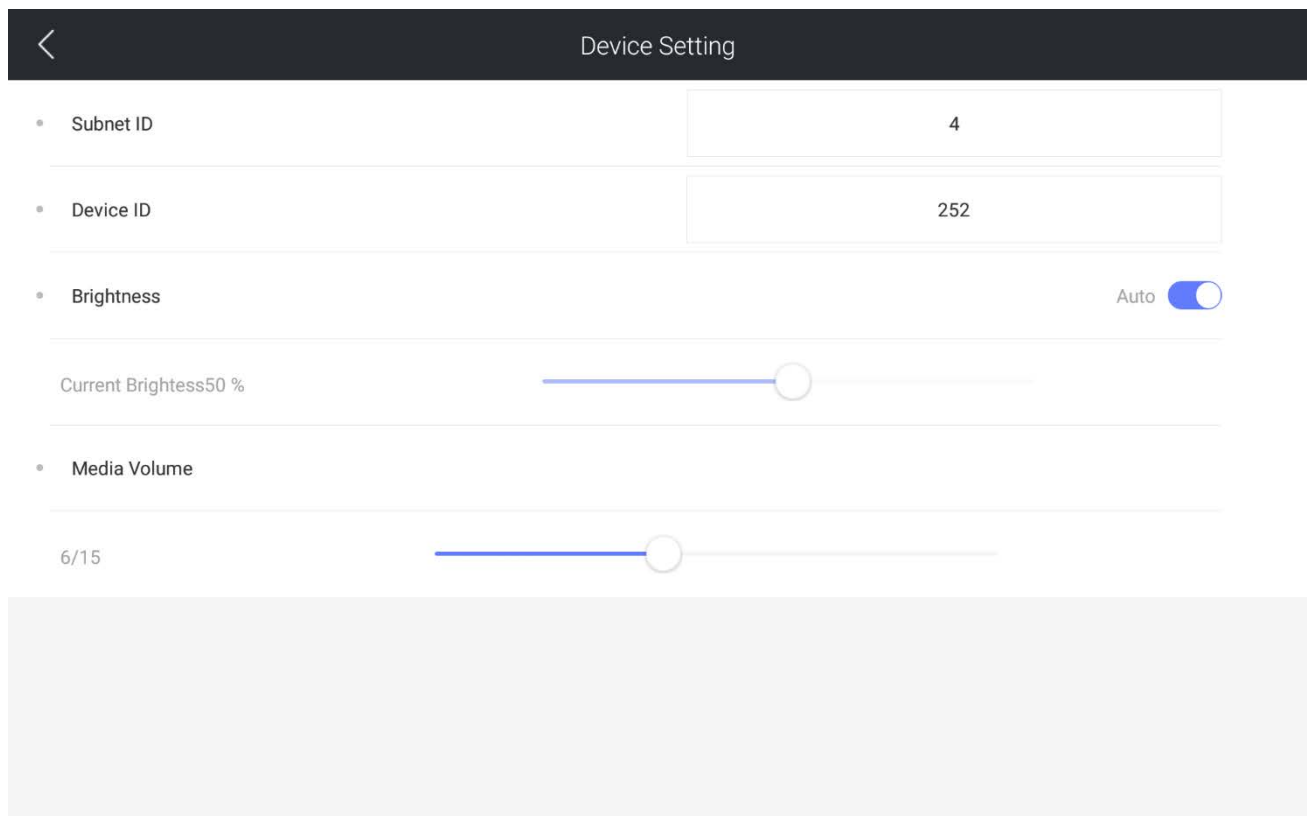


Figure 3-3 Device Setting

3.3 Change Password

The “Password” mentioned here refers to the password to enter “Setting” page, which is 123456 by default. Click “Change Password” to enter the new password and confirm password directly as the original password is entered when entering “Setting” page.

3.4 Software Update

Click “Update” in “Setting” page to view current software version, as shown in Figure 3-4.

Click “Check for update” to check if there’s available update and choose to update if update is available.

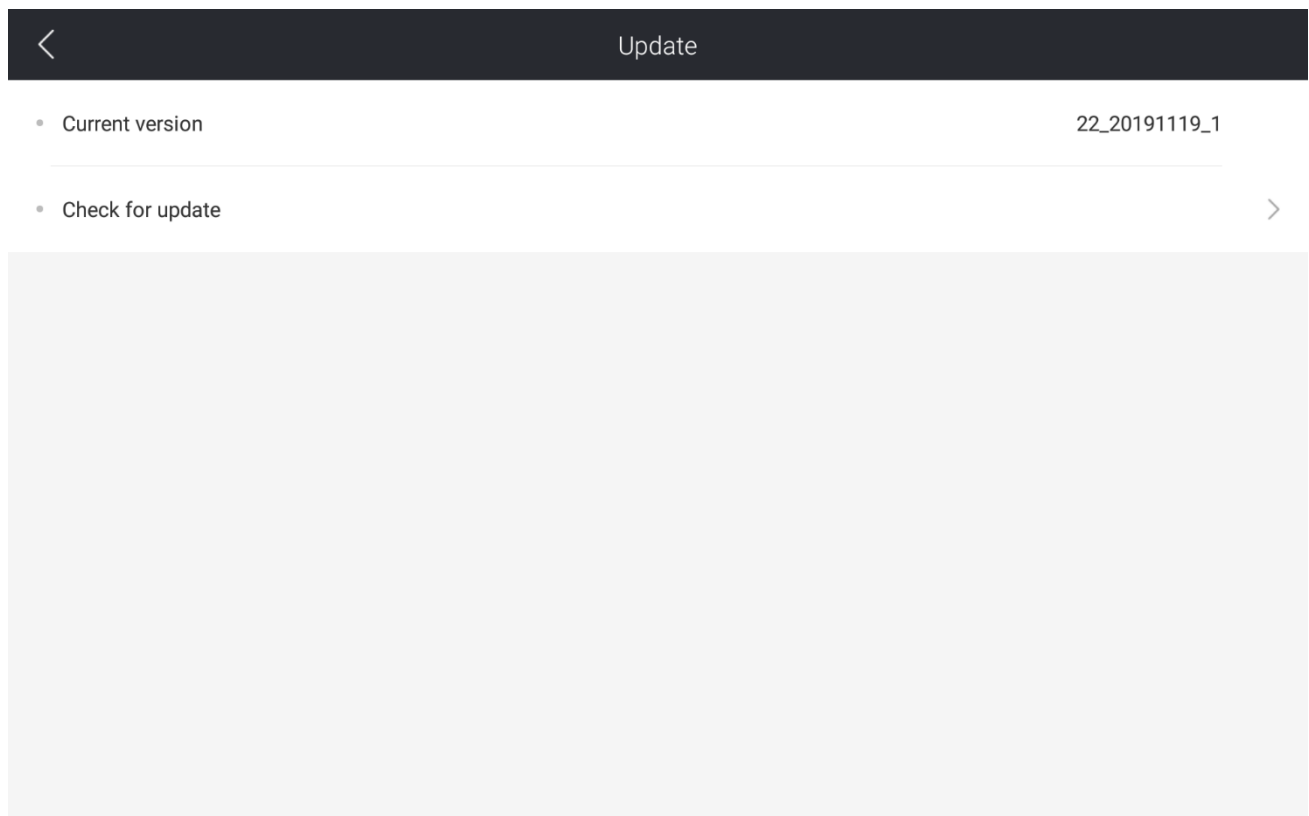


Figure 3-4 Software Update

4 Operation

4.1 Interface

S10 has 2 main pages: main page and control page, and user can swipe left/right to switch between the pages.

➤ Main Page

As shown in Figure 4-1, main page shows the scene, light and curtain button(s) that have been added to favorites.

➤ Control Page

As shown in Figure 4-2, control page shows the room and the device(s)/scene(s) bound to it.

Select the room from the room list on the top right side of the screen. Click on the room to view and control its scene/device.

Click the main page button on the top left side of the screen or swipe right to return to main page.

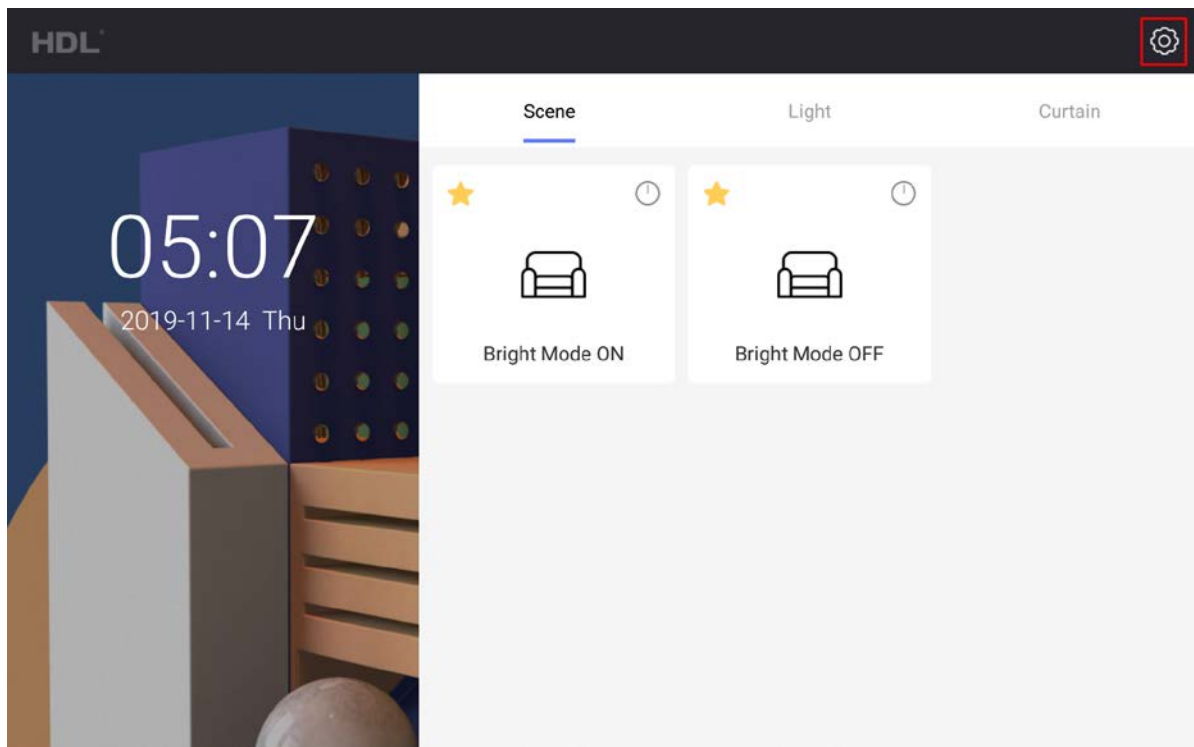


Figure 4-1 Main page

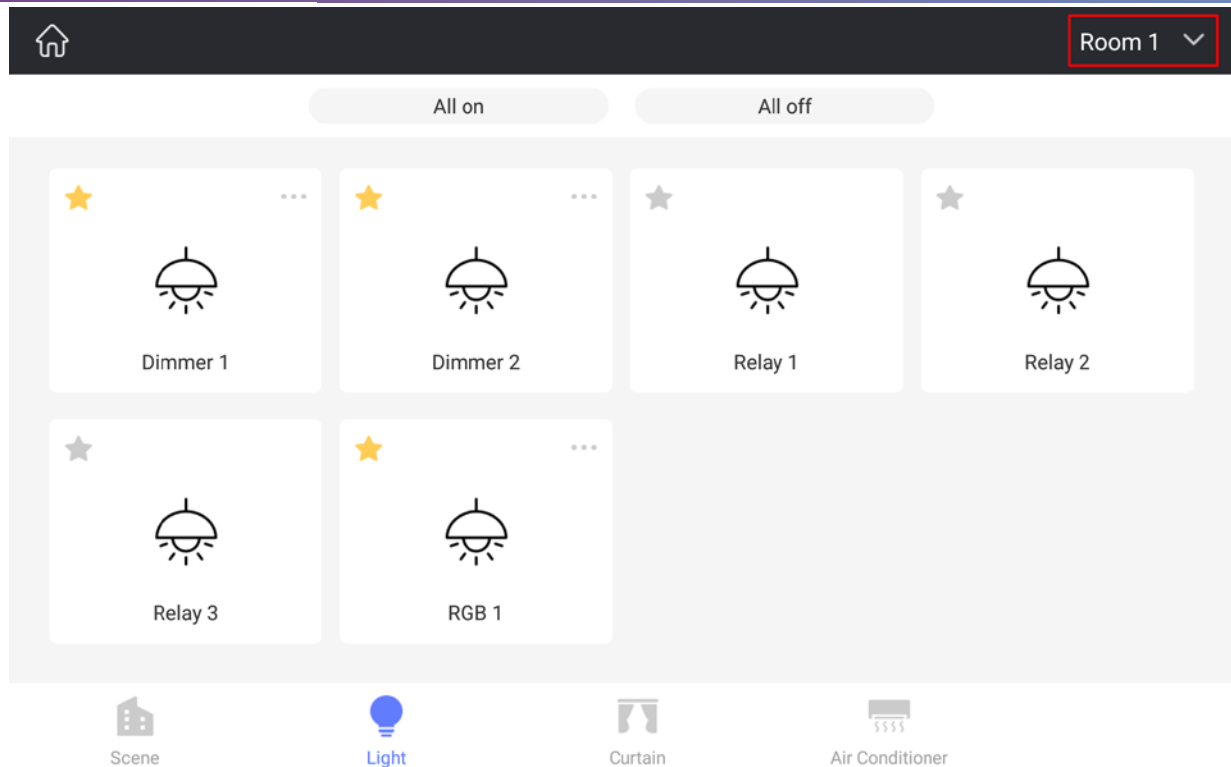


Figure 4-2 Control Page

4.2 Lighting control

Select the “Light” tab at the bottom of device page to view all the lights in the room. Click the light button to turn on/off the corresponding light.

- ① If “Relay” is selected during configuration, only the turning on/off of the relay can be controlled.
- ② If “Dimmer” or “RGB” is selected during configuration, click “...” on the top right side of the window to adjust the dimmer, as shown in Figure 4-3:
 - RGB color (for RGB only): select the color from the color wheel to adjust the light color.
 - Brightness: when the light is turned on, user may adjust the light brightness with the slider.
 - Fade-in/out Time: to set the fade-in/out time of the light.

After adjustment, click anywhere outside the configuration window to save the changes, otherwise click “Close” button on the top right side of the configuration window to cancel.

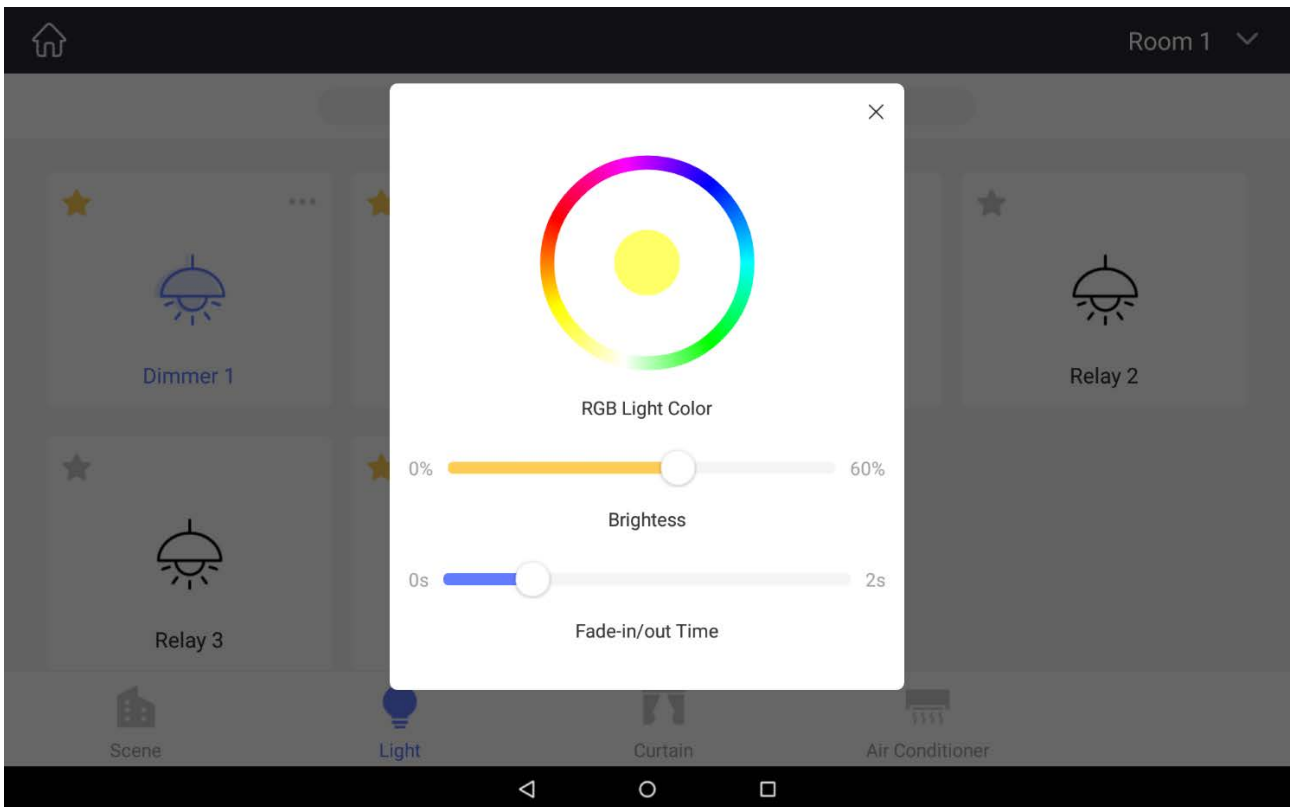
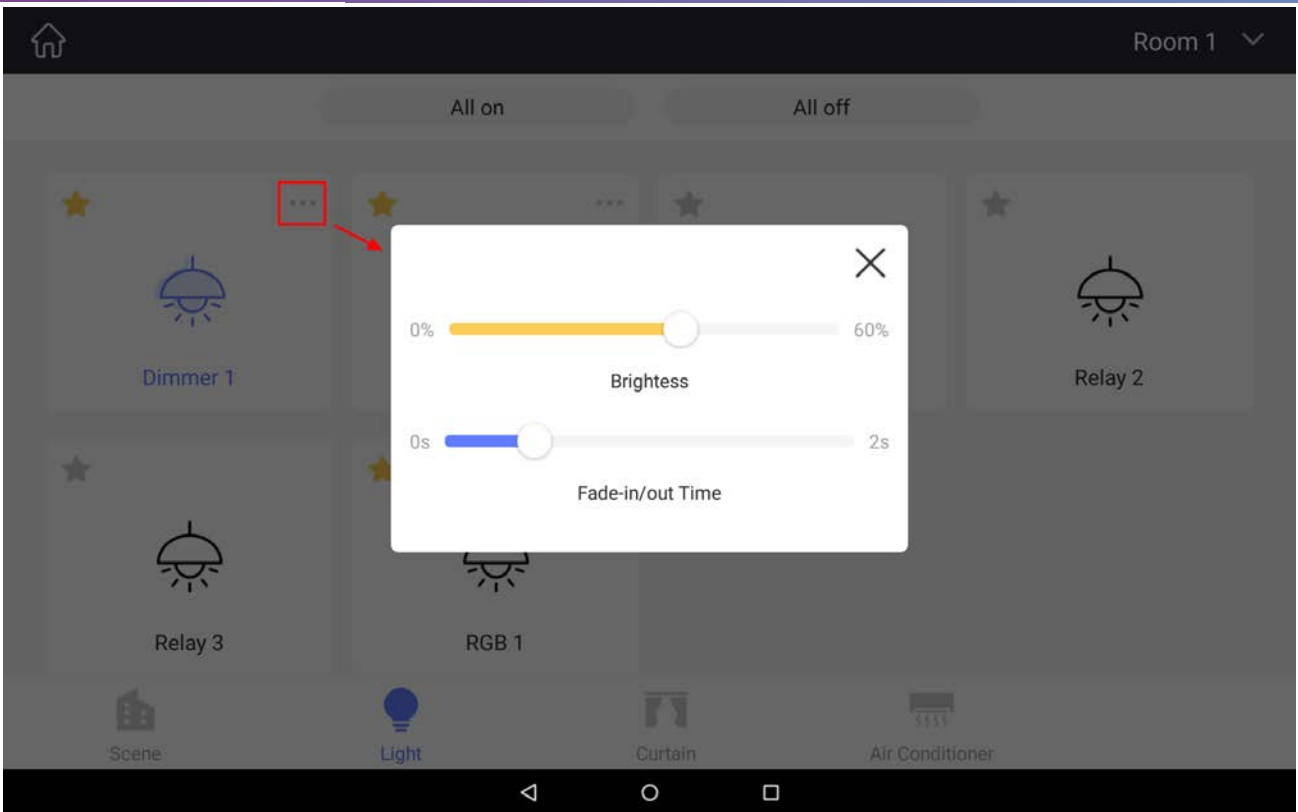


Figure 4-3 Dimmer/RGB setting

4.3 Curtain Control

Select the “Curtain” tab at the bottom of device page to view all the curtains in the room, as shown in Figure 4-4. Click the button to control the curtain (open, close, stop), or touch the curtain to undertake curtain percentage control.

Notice:

For now, only retractable curtain and roller curtain support percentage control, while curtain module only supports control via buttons.

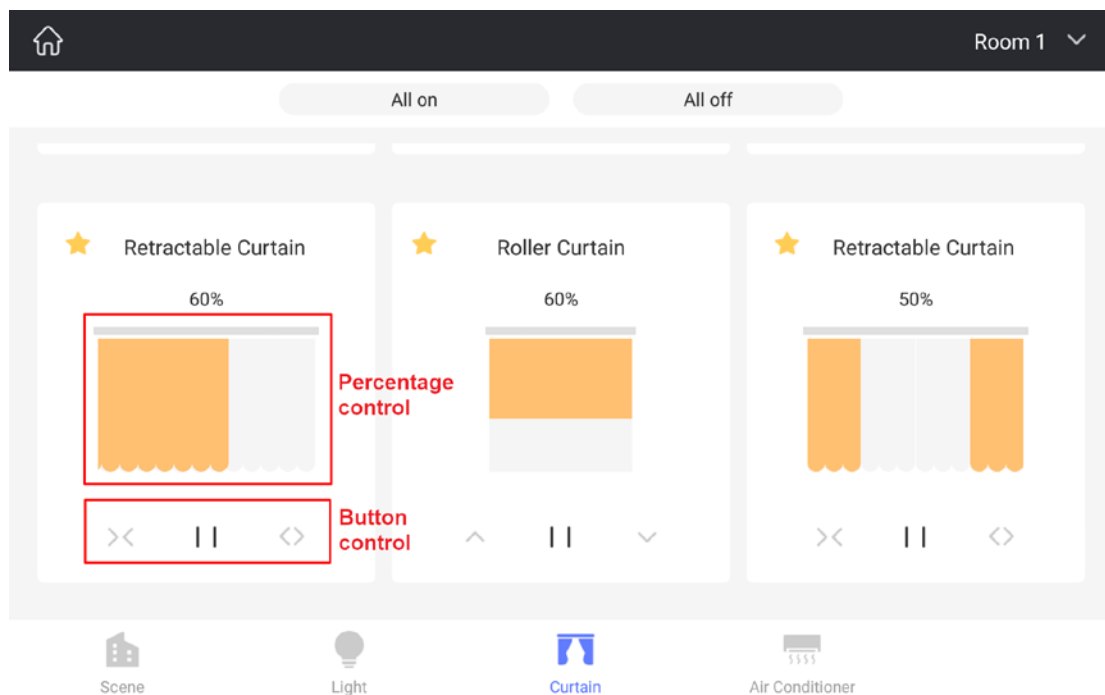


Figure 4-4 Curtain Control

4.4 Air Conditioner Control

Select the “Air Conditioner” tab at the bottom of device page to view all the air conditioners in the room, as shown in Figure 4-5. Click the button to control the air conditioner, including switching on/off, temperature adjustment, mode selection and fan speed control.

Notice:

Temperature adjustment is available only after the AC is turned on, which means user is not able to turn on the AC directly through temperature adjustment if the AC is in off status.

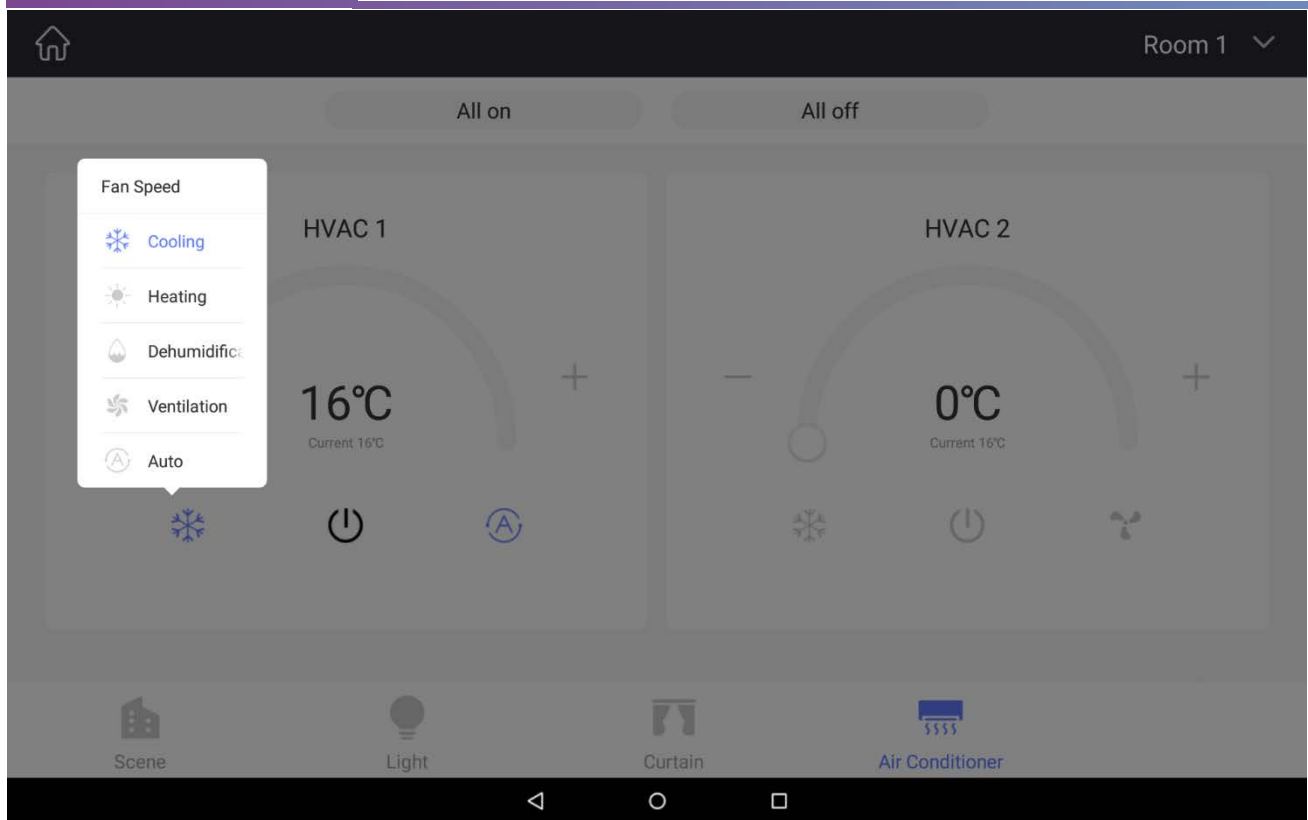


Figure 4-5 Air Conditioner Control

4.5 Scene Control

After editing in Buspro Setup Tool 2 and uploading scene data to S10, scene button can be seen in room page. Click the button to send scene data, please refer to “[Scene Management](#)”.

As shown in Figure 4-6, click the button on the top right side of the window to open delay time setting window, and select the delay time. After adjustment, click anywhere outside the configuration window to save the changes, otherwise click “Close” button on the top right side of the configuration window to cancel. Delay button will be turned on after delay time configuration.

After configuration, the scene will be activated after the preset delay time.

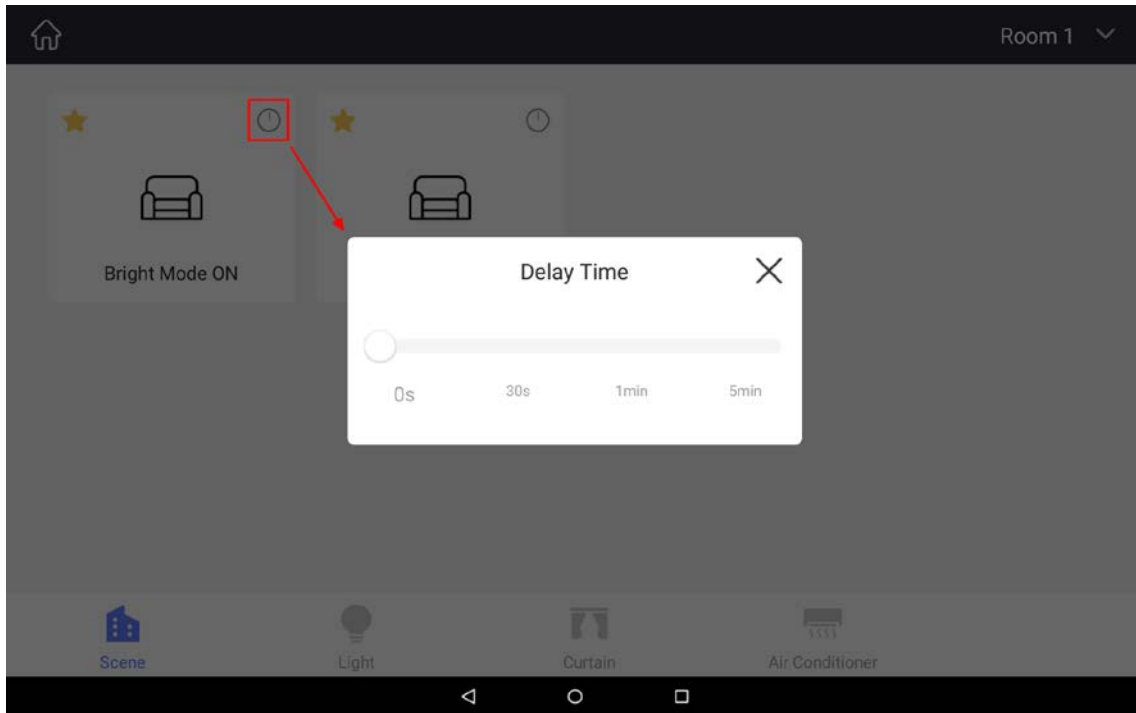


Figure 4-6 Scene Delay Time Setting

4.6 Add Button to Favorites/Remove Button from Favorites

Users can add the frequently used button to favorites, in order to control the button in main page directly.

Click the white star button on the top left side of the scene/light/curtain button in control page to add the button to favorites, and the star will turn to yellow afterwards, as shown in Figure 4-7. Click the star again to remove the button from favorites.

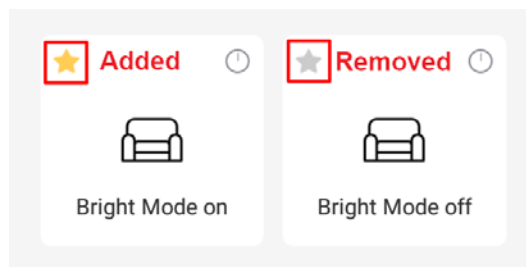


Figure 4-7 Add Button to Favorites/Remove Button from Favorites